

Design and documentation of riser support Tray at Åsgaard

Client: UMOE Anchor Contracting AS

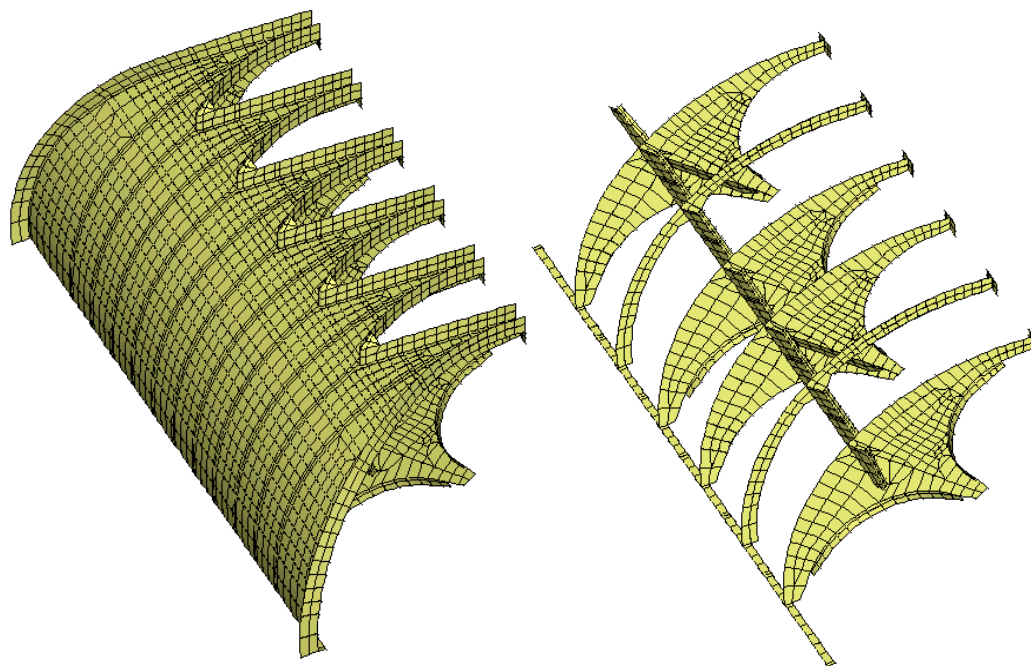
Project management for the EPC contract (FiReCo/NOM)

- Geometrical design
- Structural design of GRP tray
- Material selection
- FE-analysis of GRP parts and interfaces
- Design reports
- Design drawings
- Production drawings
- Production procedures
- Testing and documentation



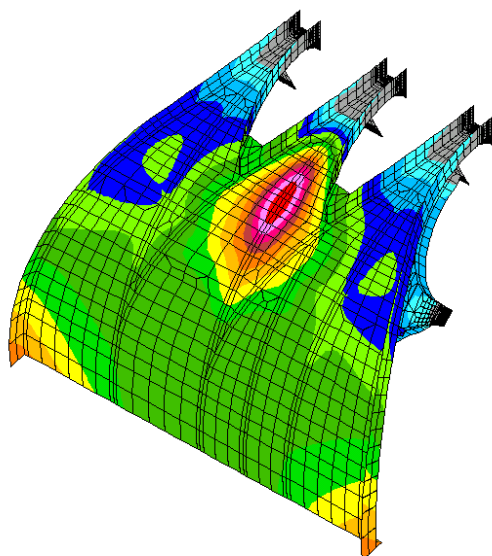
Trays designed by FiReCo to support risers from sub sea wellheads to surface

Offshore



3D FE-Model of RSS for Gas Export buoy

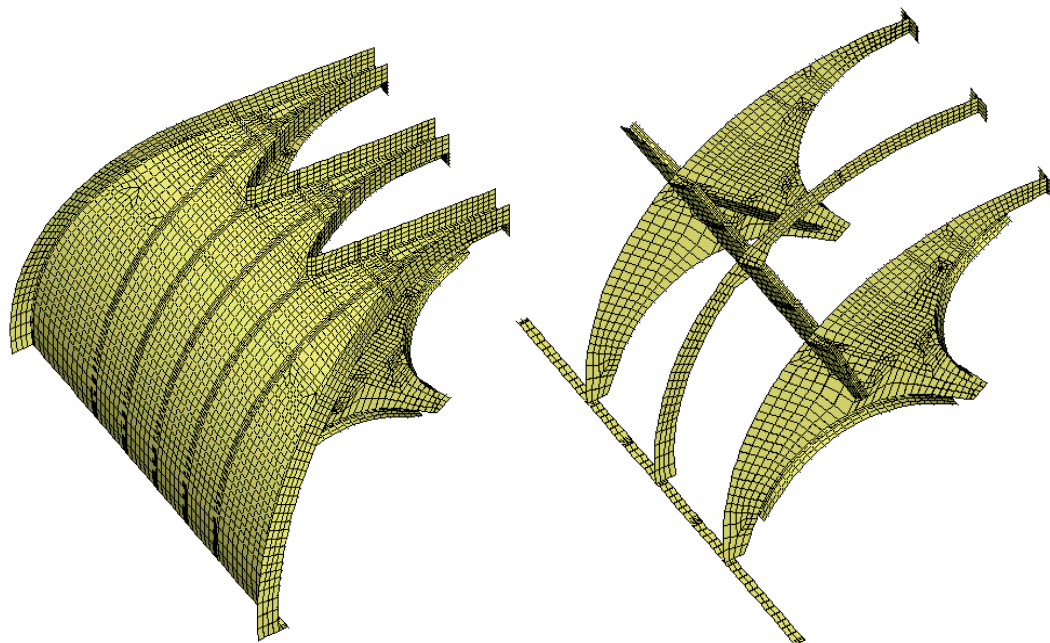
DISPLAY III - GEOMETRY MODELING SYSTEM (8.0.0) PRE/POST MODULE



FMC7, 0 degrees
Riser Tray Umoe 20.05.99

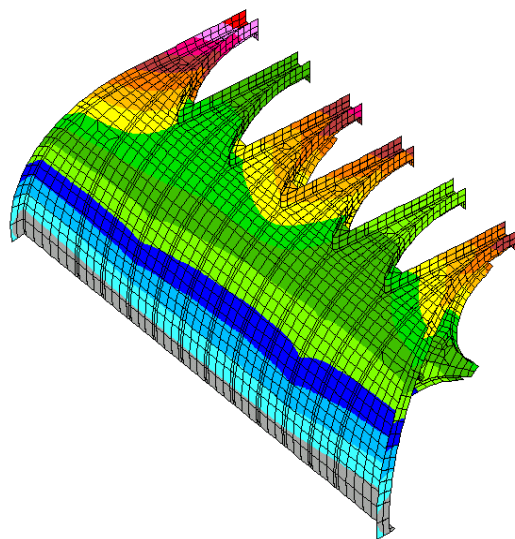
Deformation plot from FE analysis

Offshore



3D,FE- Model of RSS for Midgaard buoy

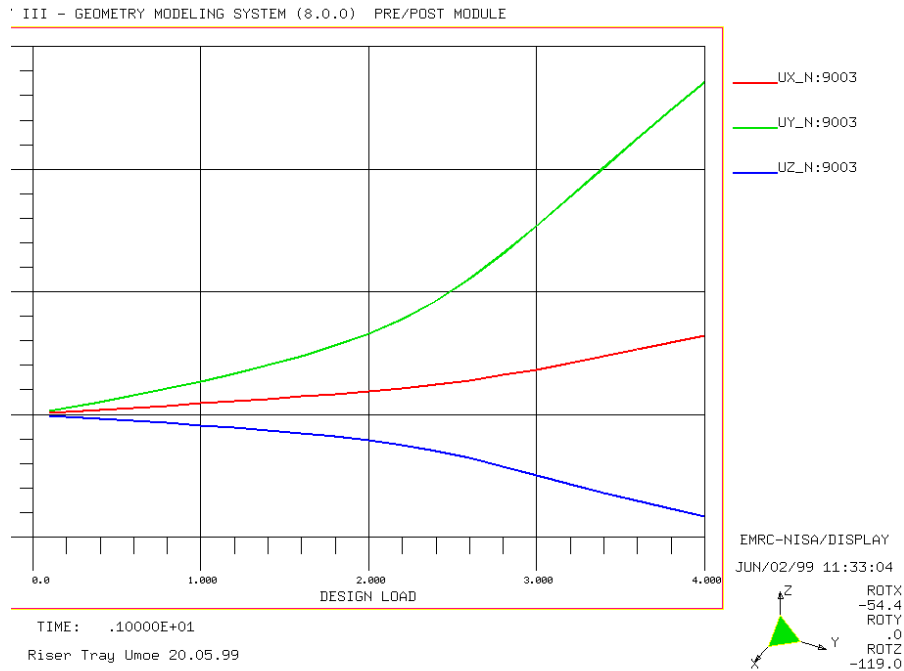
DISPLAY III - GEOMETRY MODELING SYSTEM (8.0.0) PRE/POST MODULE



Lifting 1
Riser Tray Umoe 18.04.99

Deformation plot from FE analysis

Offshore



Non-linear response - load – deformation of points on the structure (from geometric non linear analysis)